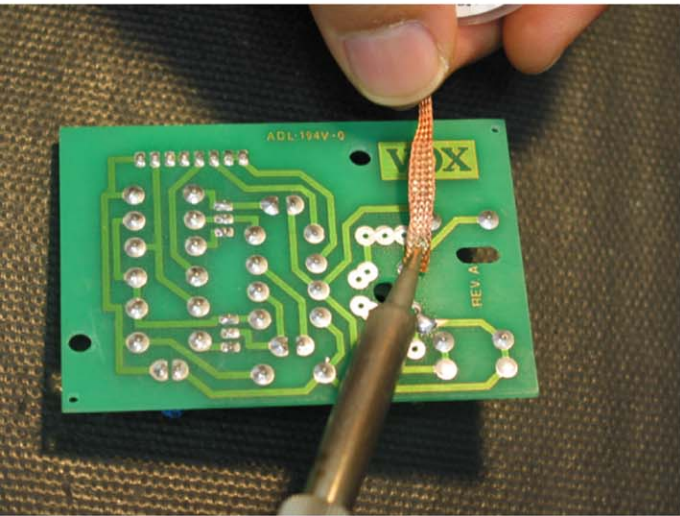
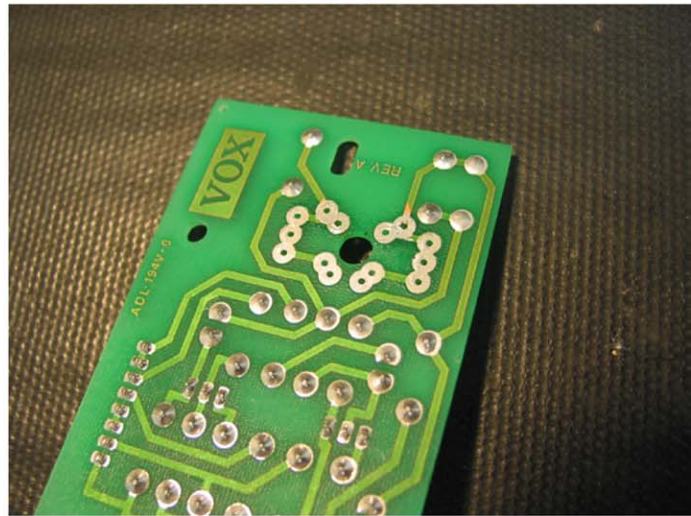


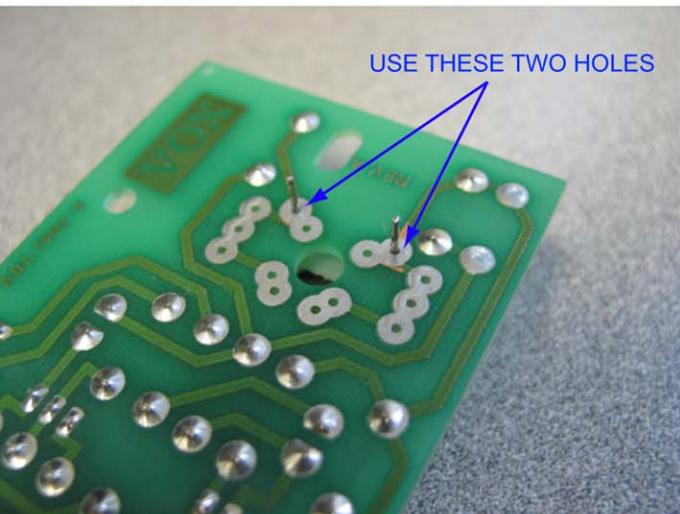
Fulltone Clyde Inductor Vox V847 Installation



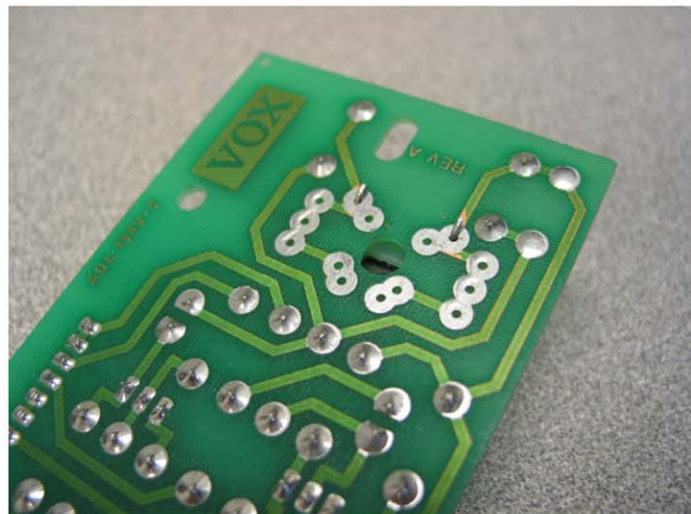
1) To remove the existing inductor, use desoldering pump or desoldering wick. Be very careful not to apply heat for too long.



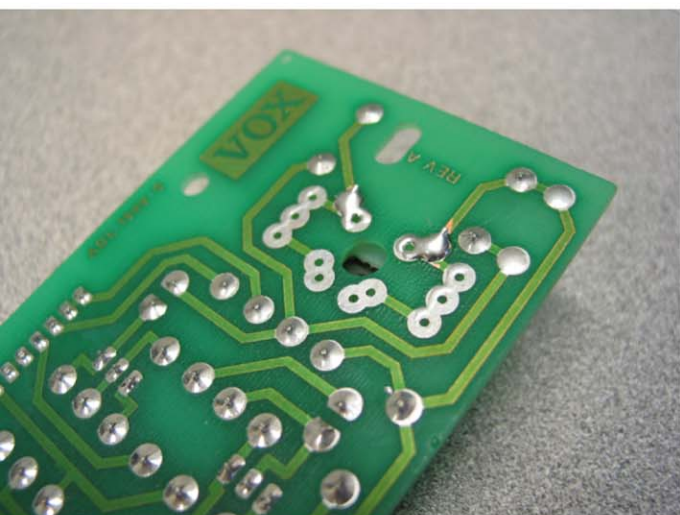
2) After removing components the excess solder should be removed from solder pads



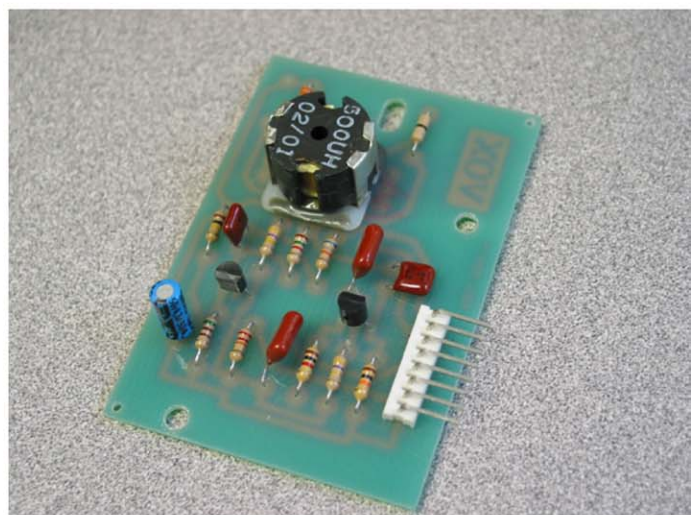
3) install the CLYDE inductor by carefully pushing down onto the PCB. If you do this forcibly, it can cause damage to the inductor.



4) Bend the Inductor's legs carefully.



5) Solder the legs quickly



6) Finish